



BFT BURZONI



Nuova linea
**TRONCATURA
e SCANALATURA**



*New line! Grooving and parting-off
Neue Linie! Abstechen und Einstechen*



Nuova linea di
**TRONCATURA
e SCANALATURA**

*New line! Grooving and parting-off
Neue Linie! Abstechen und Einstechen*





Porta inserti e inserti per scanalatura e troncatura

Toolholder and inserts for grooving and parting-off
Halter und Einsätze einsetzen zum Einstecken und Abstechen



Chiave di lettura

Key to codes / Bezeichnungssystem

Tipologia inserto		Larghezza		Mano		Raggio di punta		Angolo di spoglia		Rompitru-ciolo		Grado
TSD	Troncatura e Scanalatura Doppio	150	1,5mm	R	destro	00	0,00mm	00	0°	M1	medio	GGP25
TSO	Troncatura e Scanalatura One-side	200	2,0mm	N	neutro	015	0,15mm	04	4°	M2	medio	GGP30
TSM	Troncatura e Scanalatura Mini	300	3,0mm	L	sinistro	02	0,20mm	06	6°	M3	medio	GSL30
TSA	Troncatura Scanalatura Assiale	400	4,0mm			03	0,30mm	15	15°	MR	medio	GSL40
TSTD	Troncatura Scanalatura e Tornitura Doppio	500	5,0mm			04	0,40mm			F1	finitore	GLL15
TTDR	Troncatura e Tornitura Doppio Raggiato	600	6,0mm							X1	inox e HRSA	
TSTO	Troncatura Scanalatura e Tornitura One-side	800	8,0mm							LL	alluminio	
TSTM	Troncatura Scanalatura e Tornitura Mini	1000	10,0mm									

Tipologia utensile		Applica-zione		Mano		Dimensione		Lunghezza		Inserto		Larghezza		Profondità max		Refrige-rante	
UTSM	Utensile Troncatura e Scanalatura Monoblocco	E	Esterno	R	destro	12	12x12mm Ø12mm	L110	110mm	D	Doppio	01	1,5mm	13	13mm	W	si
UTSL	Utensile Troncatura e Scanalatura Lama	I	Interno	N	neutro	16	16x16mm Ø16mm	L125	125mm	O	One-side	02	2,0mm	25	25mm	-	no
		A	Assiale	L	sinistro	20	20x20mm Ø20mm	L140	140mm	M	Mini	03	3,0mm				
						25	25x25mm Ø25mm	L150	150mm	A	Assiale	04	4,0mm				
						26	26mm	-	opzio-nale			05	5,0mm				
						32	32x32mm 32mm Ø32mm					06	6,0mm				
												08	8,0mm				
												10	10,0mm				

Tipologia portalama		Dimensione lama		Altezza attacco		Larghezza attacco		Refrigerante	
TSPL	Troncatura e Scanalatura Porta Lama	26	26mm	20	20mm	20	20mm	W	si
		32	32mm	25	25mm	29	29mm	-	no
				32	32mm	47	47mm		



Porta inserti e inserti per scanalatura e troncatura

Toolholder and inserts for grooving and parting-off
Halter und Einsätze einsetzen zum Einstechen und Abstechen



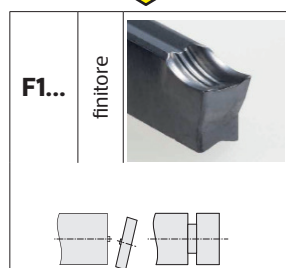
Chiave di lettura

Key to codes / Bezeichnungssystem

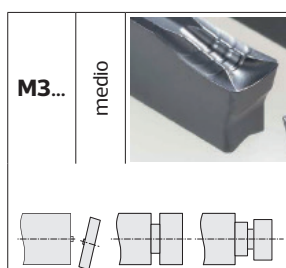
Tipologia inserto		P	M	K	N	S	H
GGP25	Grooving General Purpose 25	☺☺☺	☺☺	☺		☺	
GGP30	Grooving General Purpose 30	☺☺☺	☺	☺			
GSL30	Grooving Super Leghe 30	☺	☺☺			☺☺☺	
GSL40	Grooving Super Leghe 40	☺	☺☺			☺☺☺	
GLL15	Grooving aLLuminio 15			☺	☺☺☺		

Rompitrucoli

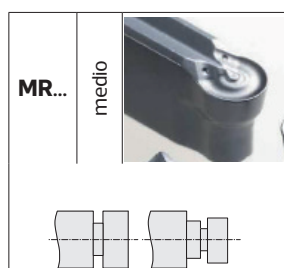
TSD... / TSO...



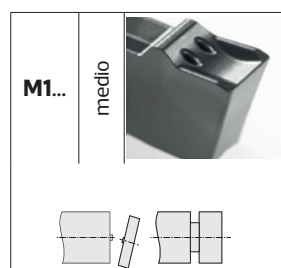
TSTD... / TSTO...



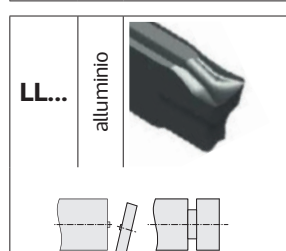
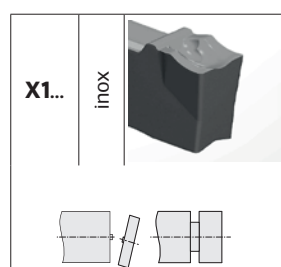
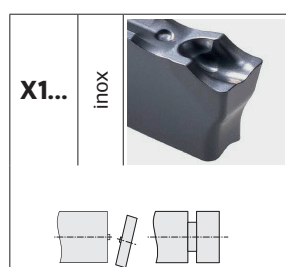
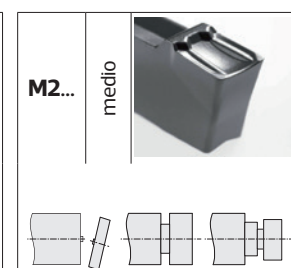
TTDR...



TSM...



TSTM...





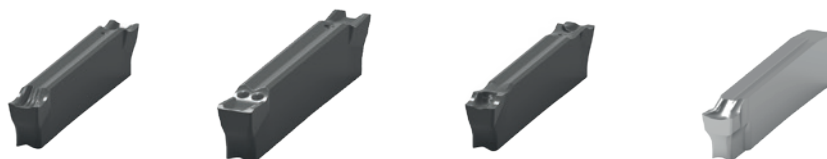
Porta inserti e inserti per scanalatura e troncatura

Toolholder and inserts for grooving and parting-off
Halter und Einsätze einsetzen zum Einstechen und Abstechen

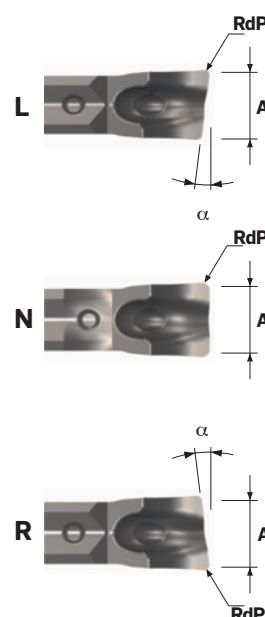


TSD...

inserto Troncatura e Scanalatura Doppio



Size A	Codice	RdP	L	N	R	α	GGP25	GGP30	GSL30	GSL40	GLL15	avanzamento mm/giro	
2,00	TSD 200 L 015 06 F1	0,15	●			6°	●	●		●		0,03	0,10
	TSD 200 L 015 06 M1	0,15	●			6°	●	●		●		0,05	0,15
	TSD 200 L 015 06 X1	0,15	●			6°	●	●		●		0,07	0,15
	TSD 200 N 02 00 F1	0,2		●		-	●	●		●		0,03	0,10
	TSD 200 N 02 00 M1	0,2		●		-	●	●		●		0,05	0,15
	TSD 200 N 02 00 X1	0,2		●		-	●	●		●		0,07	0,15
	TSD 200 N 02 00 LL	0,2		●		-					●	0,05	0,20
	TSD 200 R 015 06 F1	0,15			●	6°	●	●		●		0,03	0,10
	TSD 200 R 015 06 M1	0,15			●	6°	●	●		●		0,05	0,15
TSD 200 R 015 06 X1	0,15			●	6°	●	●		●		0,07	0,15	
3,00	TSD 300 L 02 06 F1	0,2	●			6°	●	●		●		0,05	0,15
	TSD 300 L 02 06 M1	0,2	●			6°	●	●		●		0,10	0,20
	TSD 300 L 02 06 X1	0,2	●			6°	●	●		●		0,07	0,18
	TSD 300 N 02 00 F1	0,2		●		-	●	●		●		0,05	0,15
	TSD 300 N 02 00 M1	0,2		●		-	●	●		●		0,10	0,20
	TSD 300 N 02 00 X1	0,2		●		-	●	●		●		0,07	0,18
	TSD 300 N 03 00 LL	0,3		●		-					●	0,05	0,25
	TSD 300 R 02 06 F1	0,2			●	6°	●	●		●		0,05	0,15
	TSD 300 R 02 06 M1	0,2			●	6°	●	●		●		0,10	0,20
TSD 300 R 02 06 X1	0,2			●	6°	●	●		●		0,07	0,18	
4,00	TSD 400 L 03 05 F1	0,3	●			5°	●	●		●		0,06	0,20
	TSD 400 L 03 04 M1	0,3	●			4°	●	●		●		0,12	0,27
	TSD 400 L 03 06 X1	0,3	●			4°	●	●		●			
	TSD 400 N 03 00 F1	0,3		●		-	●	●		●		0,06	0,20
	TSD 400 N 03 00 M1	0,3		●		-	●	●		●		0,12	0,27
	TSD 400 N 04 00 X1	0,4		●		-	●	●		●		0,08	0,21
	TSD 400 N 04 00 LL	0,4		●		-					●	0,05	0,30
	TSD 400 R 03 05 F1	0,3			●	5°	●	●		●		0,06	0,20
	TSD 400 R 03 04 M1	0,3			●	4°	●	●		●		0,12	0,27
TSD 400 R 03 06 X1	0,3			●	6°	●	●		●		0,08	0,21	
5,00	TSD 500 N 04 00 F1	0,4		●		-	●	●		●		0,10	0,25
	TSD 500 N 04 00 M1	0,4		●		-	●	●		●		0,15	0,30
	TSD 500 N 04 00 X1	0,4		●		-	●	●		●		0,09	0,26
6,00	TSD 600 N 04 00 M1	0,4		●		-	●	●		●		0,15	0,37
	TSD 600 N 04 00 X1	0,4		●		-	●	●		●		0,10	0,29



Rompitruccioli

F1...	finitore		M1...	medio		X1...	inox e HRSA		LL...	alluminio	
-------	----------	--	-------	-------	--	-------	-------------	--	-------	-----------	--



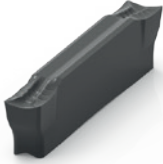
Porta inserti e inserti per scanalatura e troncatura

Toolholder and inserts for grooving and parting-off
Halter und Einsätze einsetzen zum Einstechen und Abstechen

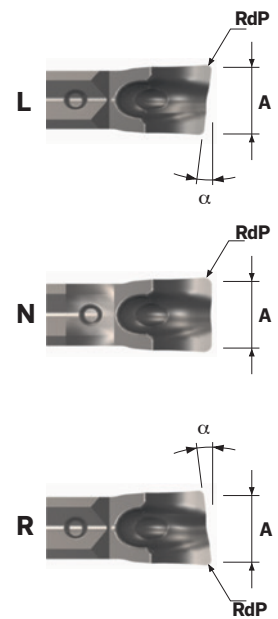


TSTD...

inserto **T**roncatura, **S**canalatura e **T**ornitura **D**oppio



Size A	Codice	RdP	L	N	R	α	GGP25	GGP30	GSL30	GSL40	GLL15	avanzamento mm/ giro	
2,00	TSTD 200 L 02 06 M3	0,2			●	6°	●	●		●		0,06	0,12
	TSTD 200 N 02 00 M3	0,2		●		-	●	●		●		0,06	0,12
	TSTD 200 R 02 06 M3	0,2	●			6°	●	●		●		0,06	0,12
3,00	TSTD 300 L 02 06 M3	0,2			●	6°	●	●		●		0,07	0,15
	TSTD 300 N 03 00 M3	0,3		●		-	●	●		●		0,07	0,15
	TSTD 300 R 02 06 M3	0,3	●			6°	●	●		●		0,07	0,15
4,00	TSTD 400 N 04 00 M3	0,4		●		-	●	●		●		0,09	0,22
5,00	TSTD 500 N 04 00 M3	0,4		●		-	●	●		●		0,10	0,26
6,00	TSTD 600 N 04 00 M3	0,4		●		-	●	●		●		0,12	0,28



Rompitruciolo

M3...	medio	
-------	-------	--



Porta inserti e inserti per scanalatura e troncatura

Toolholder and inserts for grooving and parting-off
Halter und Einsätze einsetzen zum Einstechen und Abstechen

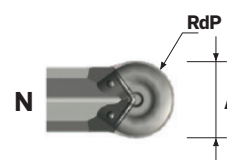


TTDR...

inserto Troncatura e Tornitura Doppio Raggiato



Size A	Codice	RdP	L	N	R	α	GGP25	GGP30	GSL30	GSL40	GLL15	avanzamento mm/giro	
2,00	TTDR 200 N 00 00 MR	1,0		●		-	●	●		●		0,07	0,26
3,00	TTDR 300 N 00 00 MR	1,5		●		-	●	●		●		0,10	0,30
4,00	TTDR 400 N 00 00 MR	2,0		●		-	●	●		●		0,15	0,35
5,00	TTDR 500 N 00 00 MR	2,5		●		-	●	●		●		0,18	0,38
6,00	TTDR 600 N 00 00 MR	3,0		●		-	●	●		●		0,20	0,43

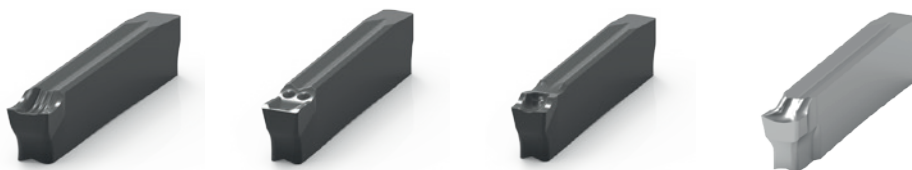


Rompitruciolo

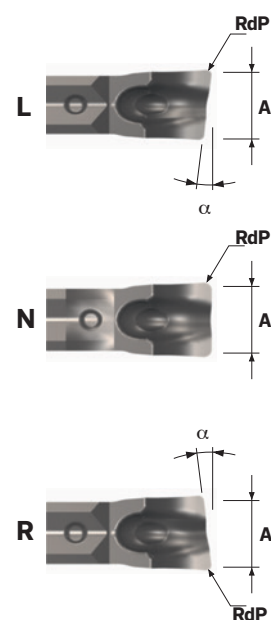
MR...	medio	
-------	-------	---

TSO...

inserto Troncatura e Scanalatura One-side



Size A	Codice	RdP	L	N	R	α	GGP25	GGP30	GSL30	GSL40	GLL15	avanzamento mm/giro	
2,00	TSO 200 L 015 06 F1	0,15			●	6°	●	●		●		0,03	0,10
	TSO 200 L 015 06 M1	0,15			●	6°	●	●		●		0,05	0,15
	TSO 200 N 02 00 F1	0,2		●		-	●	●		●		0,03	0,10
	TSO 200 N 02 00 M1	0,2		●		-	●	●		●		0,05	0,15
	TSO 200 N 02 00 X1	0,2		●		-	●	●		●		0,06	0,15
	TSO 200 N 02 00 LL	0,2		●		-					●	0,05	0,20
	TSO 200 R 015 06 F1	0,15	●			6°	●	●		●		0,03	0,10
	TSO 200 R 015 06 M1	0,15	●			6°	●	●		●		0,05	0,15
3,00	TSO 300 L 02 06 F1	0,2			●	6°	●	●		●		0,05	0,15
	TSO 300 L 02 06 M1	0,2			●	6°	●	●		●		0,10	0,20
	TSO 300 N 02 00 F1	0,2		●		-	●	●		●		0,05	0,15
	TSO 300 N 02 00 M1	0,2		●		-	●	●		●		0,10	0,20
	TSO 300 N 03 00 X1	0,3		●		-	●	●		●		0,06	0,17
	TSO 300 N 03 00 LL	0,3		●		-					●	0,05	0,25
	TSO 300 R 02 06 F1	0,2	●			6°	●	●		●		0,05	0,15
	TSO 300 R 02 06 M1	0,2	●			6°	●	●		●		0,10	0,20
4,00	TSO 400 N 03 00 F1	0,3		●		-	●	●		●		0,06	0,2
	TSO 400 N 03 00 M1	0,3		●		-	●	●		●		0,12	0,27
	TSO 400 N 04 00 X1	0,4		●		-	●	●		●		0,08	0,21
	TSO 400 N 04 00 LL	0,4		●		-					●	0,05	0,30



Rompitruccioli

F1...	M1...	X1...	LL...
finitore	medio	inox e HRSA	alluminio



Porta inserti e inserti per scanalatura e troncatura

Toolholder and inserts for grooving and parting-off
Halter und Einsätze einsetzen zum Einstechen und Abstechen

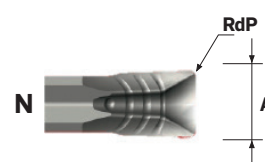


TSTO...

inserto Troncatura, Scanalatura e Tornitura One-side



Size A	Codice	RdP	L	N	R	α	GGP25	GGP30	GSL30	GSL40	GLL 15	avanzamento mm/ giro	
2,00	TSTO 200 N 02 00 M3	0,2		●		-	●	●		●		0,06	0,12
3,00	TSTO 300 N 03 00 M3	0,3		●		-	●	●		●		0,08	0,15
4,00	TSTO 400 N 04 00 M3	0,4		●		-	●	●		●		0,09	0,22

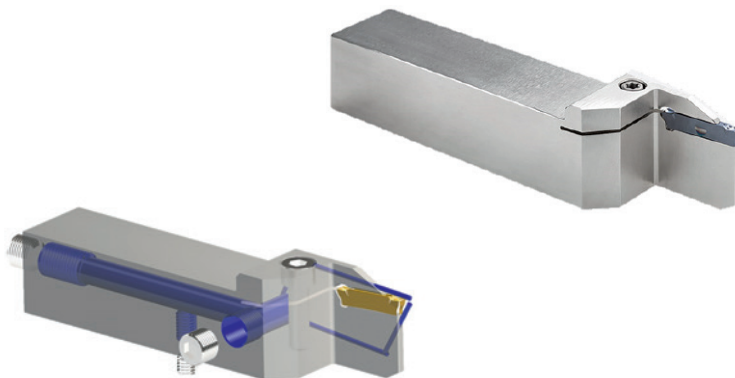
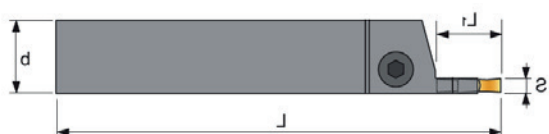


Rompitruciolo

M3...	medio	
-------	-------	--

UTSM...D...

Utensile Troncare Scanalare Monoblocco per inserto Doppio (e/o one-side)



Size A	Codice	L	N	R	Inserti	b	h	L	L1					
2,00	UTSM E L 12 L125 D 02 13	●			TSO 200... TSTO 200... TSD 200... TTDR 200... TSTD 200...	12	12	125	13	TSTCEI35	CVT15			
	UTSM E R 12 L125 D 02 13		●			12	12	125	13	TSTCEI35	CVT15			
	UTSM E L 16 L125 D 02 13	●				16	16	125	13	TSTCEI40	CVT20			
	UTSM E L 16 L125 D 02 13 W	●				16	16	125	13	TSTCEI60	CHEX050	TSGW1-8G	TSGR60	CHEX030
	UTSM E R 16 L125 D 02 13		●			16	16	125	13	TSTCEI40	CVT20			
	UTSM E R 16 L125 D 02 13 W		●			16	16	125	13	TSTCEI60	CHEX050	TSGW1-8G	TSGR60	CHEX030
	UTSM E L 20 L125 D 02 13	●				20	20	125	13	TSTCEI40L	CVT20			
	UTSM E L 20 L125 D 02 13 W	●				20	20	125	13	TSTCEI60	CHEX050	TSGW1-8G	TSGR60	CHEX030
	UTSM E R 20 L125 D 02 13		●			20	20	125	13	TSTCEI40L	CVT20			
	UTSM E R 20 L125 D 02 13 W		●			20	20	125	13	TSTCEI60	CHEX050	TSGW1-8G	TSGR60	CHEX030
3,00	UTSM E L 12 L125 D 03 13	●			TSO 300... TSTO 300... TSD 300... TTDR 300... TSTD 300...	12	12	125	13	TSTCEI35	CVT15			
	UTSM E R 12 L125 D 03 13		●			12	12	125	13	TSTCEI35	CVT15			
	UTSM E L 16 L125 D 03 13	●				16	16	125	13	TSTCEI40	CVT20			
	UTSM E R 16 L125 D 03 13		●			16	16	125	13	TSTCEI40	CVT20			
	UTSM E L 16 L125 D 03 25	●				16	16	125	25	TSTCEI40	CVT20			
	UTSM E L 16 L125 D 03 25 W	●				16	16	125	25	TSTCEI60	CHEX050	TSGW1-8G	TSGR60	CHEX030
	UTSM E R 16 L125 D 03 25		●			16	16	125	25	TSTCEI40	CVT20			
	UTSM E R 16 L125 D 03 25 W		●			16	16	125	25	TSTCEI60	CHEX050	TSGW1-8G	TSGR60	CHEX030
	UTSM E L 20 L125 D 03 13	●				20	20	125	13	TSTCEI40L	CVT20			
	UTSM E R 20 L125 D 03 13		●			20	20	125	13	TSTCEI40L	CVT20			
	UTSM E L 20 L125 D 03 25	●				20	20	125	25	TSTCEI40L	CVT20			
	UTSM E L 20 L125 D 03 25 W	●				20	20	125	25	TSTCEI60	CHEX050	TSGW1-8G	TSGR60	CHEX030
	UTSM E R 20 L125 D 03 25		●			20	20	125	25	TSTCEI40L	CVT20			
	UTSM E R 20 L125 D 03 25 W		●			20	20	125	25	TSTCEI60	CHEX050	TSGW1-8G	TSGR60	CHEX030
	UTSM E L 25 L125 D 03 13	●				25	25	125	13	TSTCEI40L	CVT20			
	UTSM E R 25 L125 D 03 13		●			25	25	125	13	TSTCEI40L	CVT20			
	UTSM E L 25 L125 D 03 25	●				25	25	125	25	TSTCEI40L	CVT20			
	UTSM E L 25 L125 D 03 25 W	●				25	25	125	25	TSTCEI60	CHEX050	TSGW1-8G	TSGR60	CHEX030
UTSM E R 25 L125 D 03 25		●		25	25	125	25	TSTCEI40L	CVT20					
UTSM E R 25 L125 D 03 25 W		●		25	25	125	25	TSTCEI60	CHEX050	TSGW1-8G	TSGR60	CHEX030		



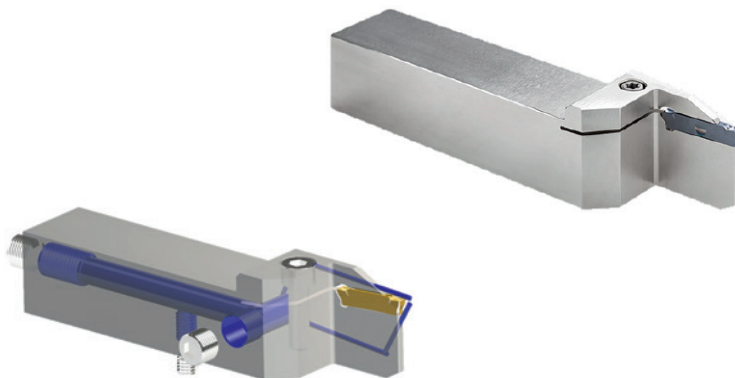
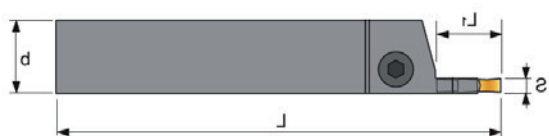
Porta inserti e inserti per scanalatura e troncatura

Toolholder and inserts for grooving and parting-off
Halter und Einsätze einsetzen zum Einstechen und Abstechen



UTSM...D...

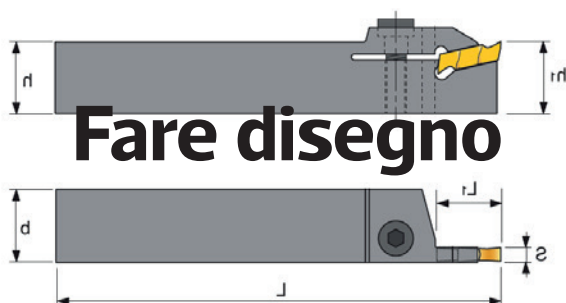
Utensile Troncare Scanalare Monoblocco per inserto Doppio (e/o one-side)



Size A	Codice	L	N	R	Inserti	b	h	L	L1					
4,00	UTSM E L 16 L125 D 04 25	●			TSO 400... TSTO 400... TSD 400... TTDR 400... TSTD 400...	16	16	125	25	TSTCEI40	CVT20			
	UTSM E L 16 L125 D 04 25 W	●				16	16	125	25	TSTCEI60	CHEX050	TSGW1-8G	TSGR60	CHEX030
	UTSM E R 16 L125 D 04 25			●		16	16	125	25	TSTCEI40	CVT20			
	UTSM E R 16 L125 D 04 25 W			●		16	16	125	25	TSTCEI60	CHEX050	TSGW1-8G	TSGR60	CHEX030
	UTSM E L 20 L125 D 04 25	●				20	20	125	25	TSTCEI40L	CVT20			
	UTSM E L 20 L125 D 04 25 W	●				20	20	125	25	TSTCEI60	CHEX050	TSGW1-8G	TSGR60	CHEX030
	UTSM E R 20 L125 D 04 25			●		20	20	125	25	TSTCEI40L	CVT20			
	UTSM E R 20 L125 D 04 25 W			●		20	20	125	25	TSTCEI60	CHEX050	TSGW1-8G	TSGR60	CHEX030
	UTSM E L 25 L125 D 04 25	●				25	25	125	25	TSTCEI40L	CVT20			
	UTSM E L 25 L125 D 04 25 W	●				25	25	125	25	TSTCEI60	CHEX050	TSGW1-8G	TSGR60	CHEX030
	UTSM E R 25 L125 D 04 25			●		25	25	125	25	TSTCEI40L	CVT20			
	UTSM E R 25 L125 D 04 25 W			●		25	25	125	25	TSTCEI60	CHEX050	TSGW1-8G	TSGR60	CHEX030
5,00	UTSM E L 20 L150 D 05 25	●			TSO 500... TSTO 500... TSD 500... TTDR 500... TSTD 500...	20	20	150	25	TSTCEI60	CHEX050			
	UTSM E R 20 L150 D 05 25			●		20	20	150	25	TSTCEI60	CHEX050			
	UTSM E L 25 L150 D 05 25	●				25	25	150	25	TSTCEI60	CHEX050			
	UTSM E R 25 L150 D 05 25			●		25	25	150	25	TSTCEI60	CHEX050			
6,00	UTSM E L 20 L150 D 06 25	●			TSO 600... TSTO 600... TSD 600... TTDR 600... TSTD 600...	20	20	150	25	TSTCEI60	CHEX050			
	UTSM E R 20 L150 D 06 25			●		20	20	150	25	TSTCEI60	CHEX050			
	UTSM E L 25 L150 D 06 25	●				25	25	150	25	TSTCEI60	CHEX050			
	UTSM E R 25 L150 D 06 25			●		25	25	150	25	TSTCEI60	CHEX050			

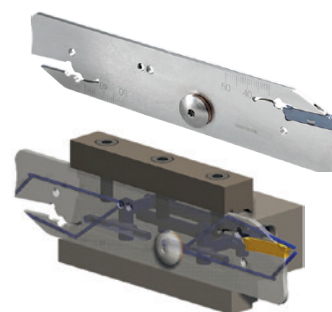
UTSL...O...

Utensile Troncare Scanalare a Lama per inserto One side (e/o doppio)



Fare disegno

**foto senza
refrigerante**



Size A	Codice	L	N	R	Inserti	H	h1	L	L1				Portalama
2,00	UTSL L 26 O 02	●			TSO 200 ... TSTO 200... TSD 200... TTDR 200... TSTD 200...	26	20	110	25			TSCH23	TSPL 26 2020
	UTSL L 26 O 02 W	●				26	20	110	25	TSVTX40NW	CVT15	TSCH23	TSPL 26 2020 W
	UTSL L 32 O 02	●				32	25	150	25			TSCH23	TSPL 32 2520
	UTSL L 32 O 02 W	●				32	25	150	25	TSVTX40NW	CVT15	TSCH23	TSPL 32 2525 W
	UTSL N 26 O 02		●			26	20	110	25			TSCH23	TSPL 26 2020
	UTSL N 26 O 02 W		●			26	20	110	25	TSVTX40NW	CVT15	TSCH23	TSPL 26 2020 W
	UTSL N 32 O 02		●			32	25	150	25			TSCH23	TSPL 32 2520
	UTSL N 32 O 02 W		●			32	25	150	25	TSVTX40NW	CVT15	TSCH23	TSPL 32 2525 W
	UTSL R 26 O 02			●		26	20	110	25			TSCH23	TSPL 26 2020
	UTSL R 26 O 02 W			●		26	20	110	25	TSVTX40NW	CVT15	TSCH23	TSPL 26 2020 W
	UTSL R 32 O 02			●		32	25	150	25			TSCH23	TSPL 32 2520
	UTSL R 32 O 02 W			●		32	25	150	25	TSVTX40NW	CVT15	TSCH23	TSPL 32 2525 W
3,00	UTSL N 26 O 03		●		TSO 300 ... TSTO 300... TSD 300... TTDR 300... TSTD 300...	26	20	110	35			TSCH23	TSPL 26 2020
	UTSL N 26 O 03 W		●			26	20	110	35	TSVTX40NW	CVT15	TSCH23	TSPL 26 2020 W
	UTSL N 32 O 03		●			32	25	150	50			TSCH23	TSPL 32 2520
	UTSL N 32 O 03 W		●			32	25	150	50	TSVTX40NW	CVT15	TSCH23	TSPL 32 2525 W
4,00	UTSL N 26 O 04		●		TSO 400 ... TSTO 400... TSD 400... TTDR 400... TSTD 400...	26	20	110	40			TSCH456	TSPL 26 2020
	UTSL N 32 O 04		●			32	25	150	50			TSCH456	TSPL 32 2520



Porta inserti e inserti per scanalatura e troncatura

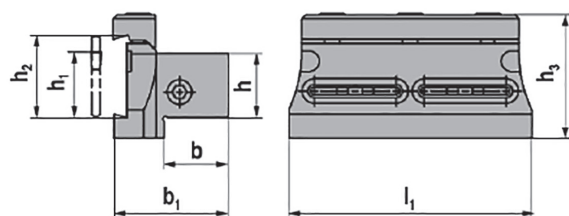
Toolholder and inserts for grooving and parting-off
Halter und Einsätze einsetzen zum Einstechen und Abstechen








TSPL...

Troncare Scanalare Porta Lama

Fare disegno



Codice	H (h2)	H1 (h1)	b (b)	h (h)	L (l1)	H2 (h3)	b1 (b1)						Lama
TSPL 26 2020	26	20	20	20	90	43	37	TSTCEI60L					UTSL...26...
TSPL 26 2020 W	26	20	20	20	82	43	40	TSTCEI60C	TSGW1-8G	CHEX050	TSGR60L	CHEX030	UTSL...26...W
TSPL 32 2520	32	25	20	25	110	49	38	TSTCEI60L					UTSL...32...
TSPL 32 2525 W	32	25	25	25	95	49	45	TSTCEI60C	TSGW1-8G	CHEX050	TSGR60L	CHEX030	UTSL...32...W



Porta inserti e inserti per scanalatura e troncatura

Toolholder and inserts for grooving and parting-off
Halter und Einsätze einsetzen zum Einstechen und Abstechen

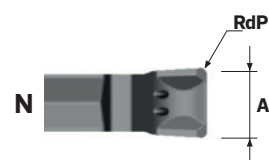


TSM...

inserto Troncatura e Scanalatura Mini



Size A	Codice	RdP	L	N	R	α	GGP25	GGP30	GSL30	GSL40	GLL15	avanzamento mm/giro	
2,00	TSM 200 N 02 00 M1	0,2	●		-		●	●	●	●		0,05	0,15
	TSM 200 N 02 00 X1	0,2	●		-		●	●		●		0,07	0,15
	TSM 200 N 02 00 LL	0,2	●		-						●	0,05	0,20
3,00	TSM 300 N 02 00 M1	0,2	●		-		●	●	●	●		0,10	0,20
	TSM 300 N 02 00 X1	0,2	●		-		●	●		●		0,08	0,18
	TSM 300 N 03 00 LL	0,3	●		-						●	0,05	0,25
4,00	TSM 400 N 03 00 M1	0,3	●		-		●	●	●	●		0,12	0,26
	TSM 400 N 04 00 X1	0,4	●		-		●	●		●			
	TSM 400 N 04 00 LL	0,4	●		-						●	0,05	0,30
5,00	TSM 500 N 03 00 M1	0,3	●		-		●	●		●		0,15	0,30
	TSM 500 N 04 00 X1	0,4	●		-		●	●		●			
6,00	TSM 600 N 04 00 M1	0,4	●		-		●	●		●		0,15	0,35
	TSM 600 N 04 00 X1	0,4	●		-		●	●		●			



Rompitrucciolo

M1...	medio	
X1...	inox e HRSA	
LL...	alluminio	



Porta inserti e inserti per scanalatura e troncatura

Toolholder and inserts for grooving and parting-off
 Halter und Einsätze einsetzen zum Einstecken und Abstechen

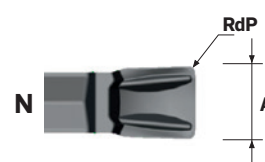


TSTM...

inserto **T**roncatura, **S**canalatura e **T**ornitura **M**ini



Size A	Codice	RdP	L	N	R	α	GGP25	GGP30	GSL30	GSL40	GLL 15	avanzamento mm/giro	
2.00	TSTO 200 N 02 00 M3	0,2		●		-	●	●		●		0,06	0,12
3.00	TSTO 300 N 03 00 M3	0,3		●		-	●	●		●		0,08	0,15
4.00	TSTO 400 N 04 00 M3	0,4		●		-	●	●		●		0,09	0,22



Rompitruciolo

M2...	medio	
-------	-------	---



**Porta inserti e inserti
per scanalatura e troncatura**

*Toolholder and inserts for grooving and parting-off
Halte- und Einsätze einsetzen zum Einstechen und Abstechen*





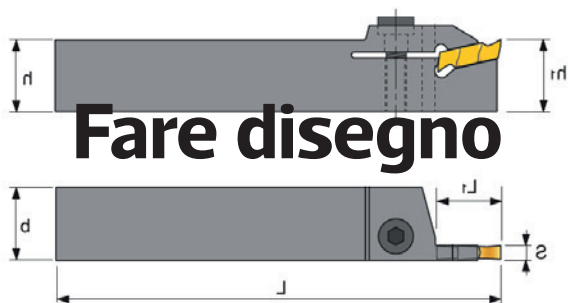
Porta inserti e inserti per scanalatura e troncatura

Toolholder and inserts for grooving and parting-off
Halter und Einsätze einsetzen zum Einstechen und Abstechen





UTSM...M...

Utensile Troncare Scanalare Monoblocco per inserto Mini



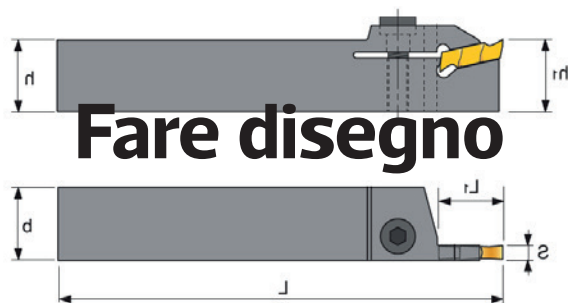
Fare disegno



Size A	Codice	L	N	R	Inserti	b	h	L	L1				
3,00	UTSM E L 16 L125 M 03 20	○			TSM 300... TSTM 300...	16	16	125	20	TSTCEI40L	CVT20		
	UTSM E R 16 L125 M 03 20			●		16	16	125	20	TSTCEI40L	CVT20		
	UTSM E L 20 L125 M 03 20	○				20	20	125	20	TSTCEI40L	CVT20		
	UTSM E R 20 L125 M 03 20			●		20	20	125	20	TSTCEI40L	CVT20		
	UTSM E L 25 L150 M 03 20	○				25	25	125	20	TSTCEI40L	CVT20		
	UTSM E R 25 L150 M 03 20			●		25	25	125	20	TSTCEI40L	CVT20		
5,00	UTSM E L 25 L150 M 05 25	●			TSM 500... TSTM 500...	25	25	150	25	TSTCEI40L	CVT20		
	UTSM E R 25 L150 M 05 25			●	25	25	150	25	TSTCEI40L	CVT20			
6,00	UTSM E L 25 L150 M 06 32	●			TSM 600... TSTM 600...	25	25	150	32	TSTCEI40L	CVT20		
	UTSM E R 25 L150 M 06 32			●	25	25	150	32	TSTCEI40L	CVT20			

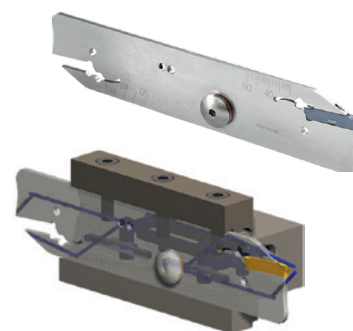
UTSL...M...




Utensile Troncare Scanalare a Lama per inserto Mini



Fare disegno

foto senza refrigerante



Size A	Codice	L	N	R	Inserti	H	h1	L	L1				Portalama
2,00	UTSL L 26 M 02	●			TSM 200 ... TSTM 200...	26	20	110	25			TSCH23	TSPL 26 2020
	UTSL L 26 M 02 W	●				26	20	110	25	TSVTX40NW	CVT15	TSCH23	TSPL 26 2020 W
	UTSL L 32 M 02	●				32	25	150	25			TSCH23	TSPL 32 2520
	UTSL L 32 M 02 W	●				32	25	150	25	TSVTX40NW	CVT15	TSCH23	TSPL 32 2525 W
	UTSL R 26 M 02			●		26	20	110	25			TSCH23	TSPL 26 2020
	UTSL R 26 M 02 W			●		26	20	110	25	TSVTX40NW	CVT15	TSCH23	TSPL 26 2020 W
	UTSL R 32 M 02			●		32	25	150	25			TSCH23	TSPL 32 2520
	UTSL R 32 M 02 W			●		32	25	150	25	TSVTX40NW	CVT15	TSCH23	TSPL 32 2525 W
3,00	UTSL N 26 M 03		●		TSM 300 ... TSTM 300...	26	20	110	35			TSCH23	TSPL 26 2020
	UTSL N 26 M 03 W		●			26	20	110	35	TSVTX40NW	CVT15	TSCH23	TSPL 26 2020 W
	UTSL N 32 M 03		●			32	25	150	50			TSCH23	TSPL 32 2520
	UTSL N 32 M 03 W		●			32	25	150	50	TSVTX40NW	CVT15	TSCH23	TSPL 32 2525 W
4,00	UTSL N 26 M 04		●		TSM 400 ... TSTM 400...	26	20	110	40			TSCH456	TSPL 26 2020
	UTSL N 26 M 04 W		●			26	20	110	40	TSVTX40NW	CVT15	TSCH456	TSPL 26 2020 W
	UTSL N 32 M 04		●			32	25	150	50			TSCH456	TSPL 32 2520
	UTSL N 32 M 04 W		●			32	25	150	50	TSVTX40NW	CVT15	TSCH456	TSPL 32 2525 W
5,00	UTSL N 32 M 05		●		TSM 500 ... TSTM 500...	32	25	150	55			TSCH456	TSPL 32 2520
6,00	UTSL N 32 M 06		●		TSM 600 ... TSTM 600...	32	25	150	60			TSCH456	TSPL 32 2520



Porta inserti e inserti per scanalatura e troncatura

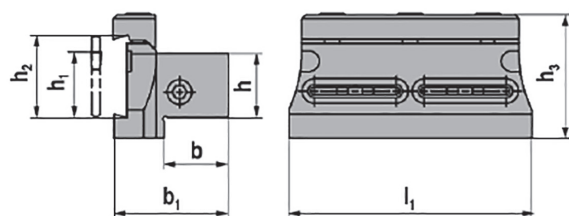
Toolholder and inserts for grooving and parting-off
Halter und Einsätze einsetzen zum Einstechen und Abstechen








TSPL...

Troncare Scanalare Porta Lama

Fare disegno



Codice	H (h2)	H1 (h1)	b (b)	h (h)	L (l1)	H2 (h3)	b1 (b1)						Lama
TSPL 26 2020	26	20	20	20	90	43	37	TSTCEI60L					UTSL...26...
TSPL 26 2020 W	26	20	20	20	82	43	40	TSTCEI60C	TSGW1-8G	CHEX050	TSGR60L	CHEX030	UTSL...26...W
TSPL 32 2520	32	25	20	25	110	49	38	TSTCEI60L					UTSL...32...
TSPL 32 2525 W	32	25	25	25	95	49	45	TSTCEI60C	TSGW1-8G	CHEX050	TSGR60L	CHEX030	UTSL...32...W



PARAMETRI DI TAGLIO
CUTTING PARAMETERS
SCHNITTPARAMETER



Mat.	HB ^(a) N/mm ^{2(b)} HrC ^(c)	Kc ⁽¹⁾	Vc (m/min)									
			GGP25		GGP30		GSL30		GSL40		GLL15	
P1	125 ^(a) / 420 ^(b)	1350										
P2	190 ^(a) / 650 ^(b)	1500	80	180	110	190			80	150	190	190
P3	250 ^(a) / 850 ^(b)	1675										
P4	220 ^(a) / 750 ^(b)	1700	60	150	110	180			70	120	180	180
P5	300 ^(a) / 1000 ^(b)	1900										
P6	200 ^(a) / 600 ^(b)	1775	80	180	110	190			80	150		
P7	275 ^(a) / 930 ^(b)	1675	50	200	120	200			90	160		
P8	300 ^(a) / 1000 ^(b)	1725	50	120	70	160			60	100		
P9	350 ^(a) / 1200 ^(b)	1800	-	-	-	-			-	-		
P10	200 ^(a) / 680 ^(b)	2450	50	200	120	200			90	160		
P11	325 ^(a) / 1100 ^(b)	2500	-	-	-	-			-	-		
M12	200 ^(a) / 680 ^(b)	1875	50	200	120	200			100	180		
M13	240 ^(a) / 820 ^(b)	1875	50	180	100	170			80	150		
M14.1	180 ^(a) / 600 ^(b)	2150	50	100	70	110			70	110		
M14.2	260 ^(a) / 900 ^(b)		50	80	60	90			60	90		
K15	180 ^(a)	1150	100	200	90	180						
K16	260 ^(a)	1350	-	-	-	-						
K17	160 ^(a)	1225	100	180	100	160						
K18	250 ^(a)	1350	-	-	-	-						
K19	130 ^(a)	1225	80	160	80	150						
K20	230 ^(a)	1420	-	-	-	-						
N21	60 ^(a)	700									200	2000
N22	100 ^(a)	800										
N23	75 ^(a)	700										
N24	90 ^(a)	700									400	1500
N25	130 ^(a)	750										
N26	110 ^(a)	700										
N27	90 ^(a)	700									200	600
N28	100 ^(a)	700										
S31	200 ^(a)	2600							20	45		
S32	280 ^(a)	3100										
S33	250 ^(a)	3300										
S34	350 ^(a)	3300							15	25		
S35	320 ^(a)	3300										
S36	400 ^(b)	1700							50	120		
S37	1050 ^(b)	2110							-	-		



our mission
Your success



45.000 articoli.
10 milioni di pezzi
in pronta consegna.

BFT BURZONI S.r.l.

*Sede Legale ed Amministrativa
Legal and administrative headquarters
Rechtlicher und administrativer Hauptsitz*

Via 1° Maggio 81-83
Località "I Casoni"
29027 Podenzano (PC) ITALY
tel. +39 0523.52.42.34
fax +39 0523.55.99.41

info@bftburzoni.com
www.bftburzoni.com